

A PART OF THE BAY WINDS PLANNED UNIT DEVELOPMENT

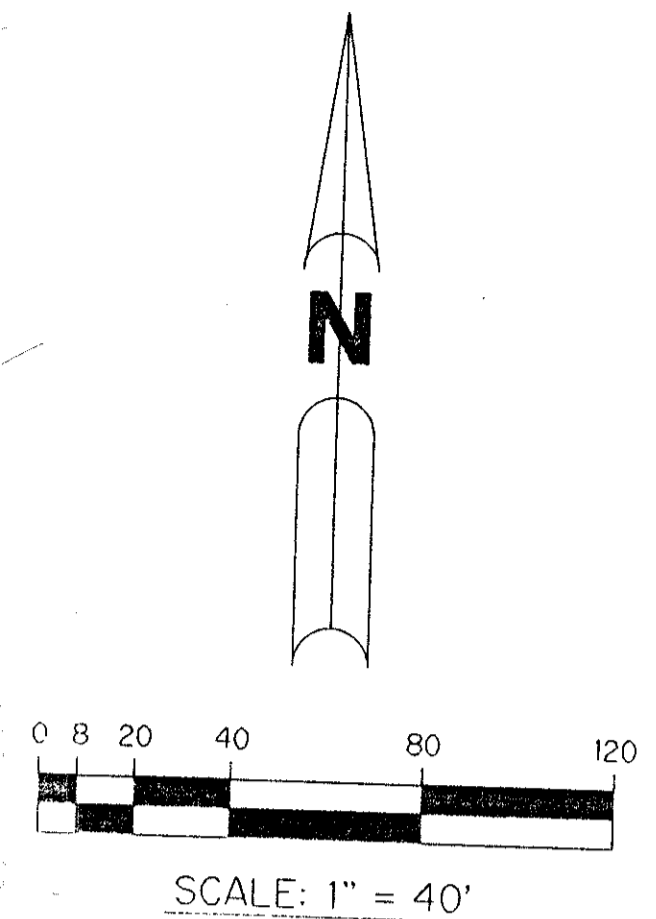
BOCA WINDS - PARCEL E

A PARCEL OF LAND LYING IN SECTION 22 AND 27, TOWNSHIP 47 SOUTH, RANGE 41 EAST, SAID PARCEL ALSO BEING A REPLAT OF A PORTION OF TRACTS 9, 10, 11, 14, 15 AND 16, FLORIDA FRUITLANDS COMPANY'S SUBDIVISION NO. 2, AS RECORDED IN PLAT BOOK 1, PAGE 102, PUBLIC RECORDS OF PALM BEACH COUNTY, FLORIDA.

SHEET 4 OF 8 NOVEMBER, 1993

201-005

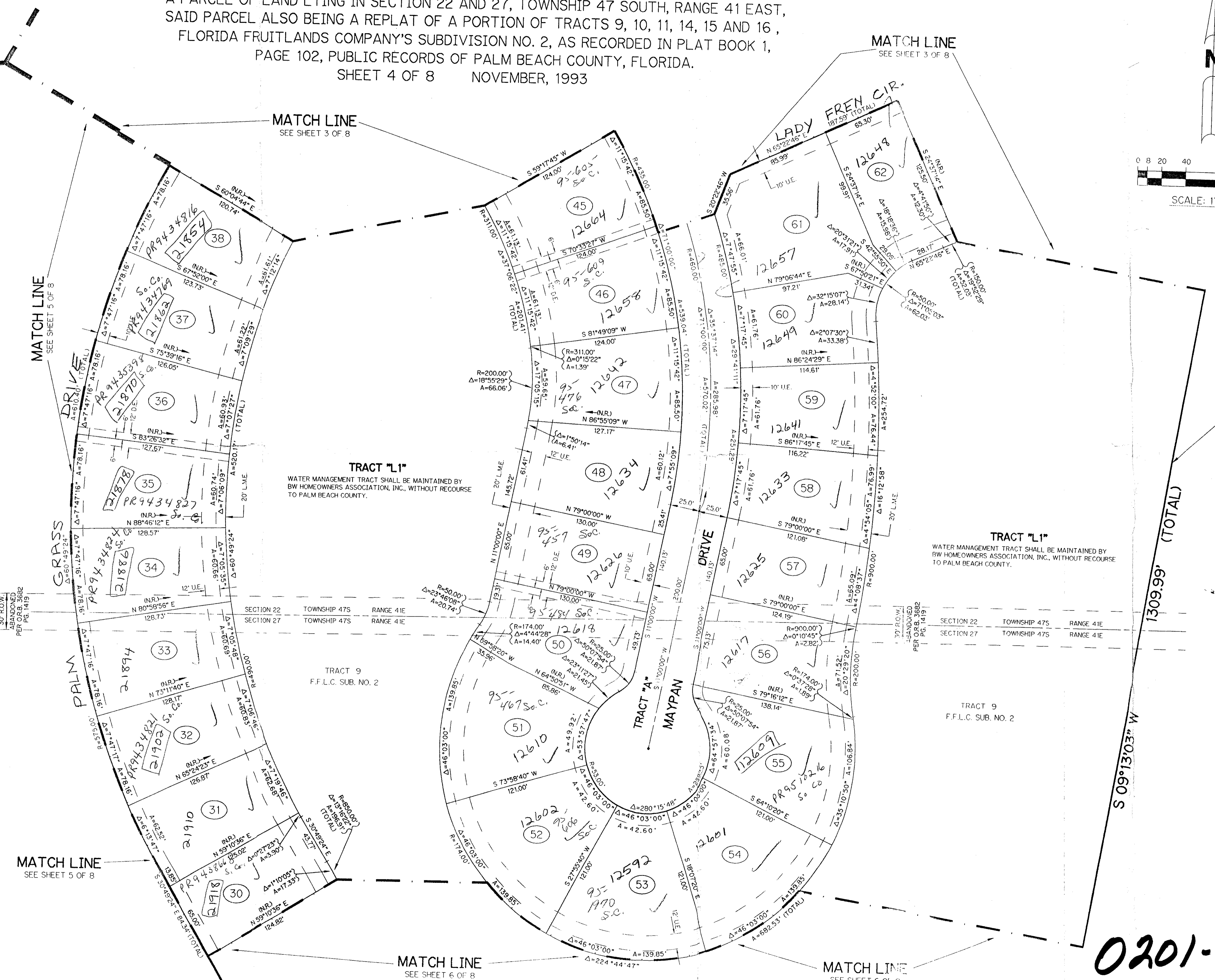
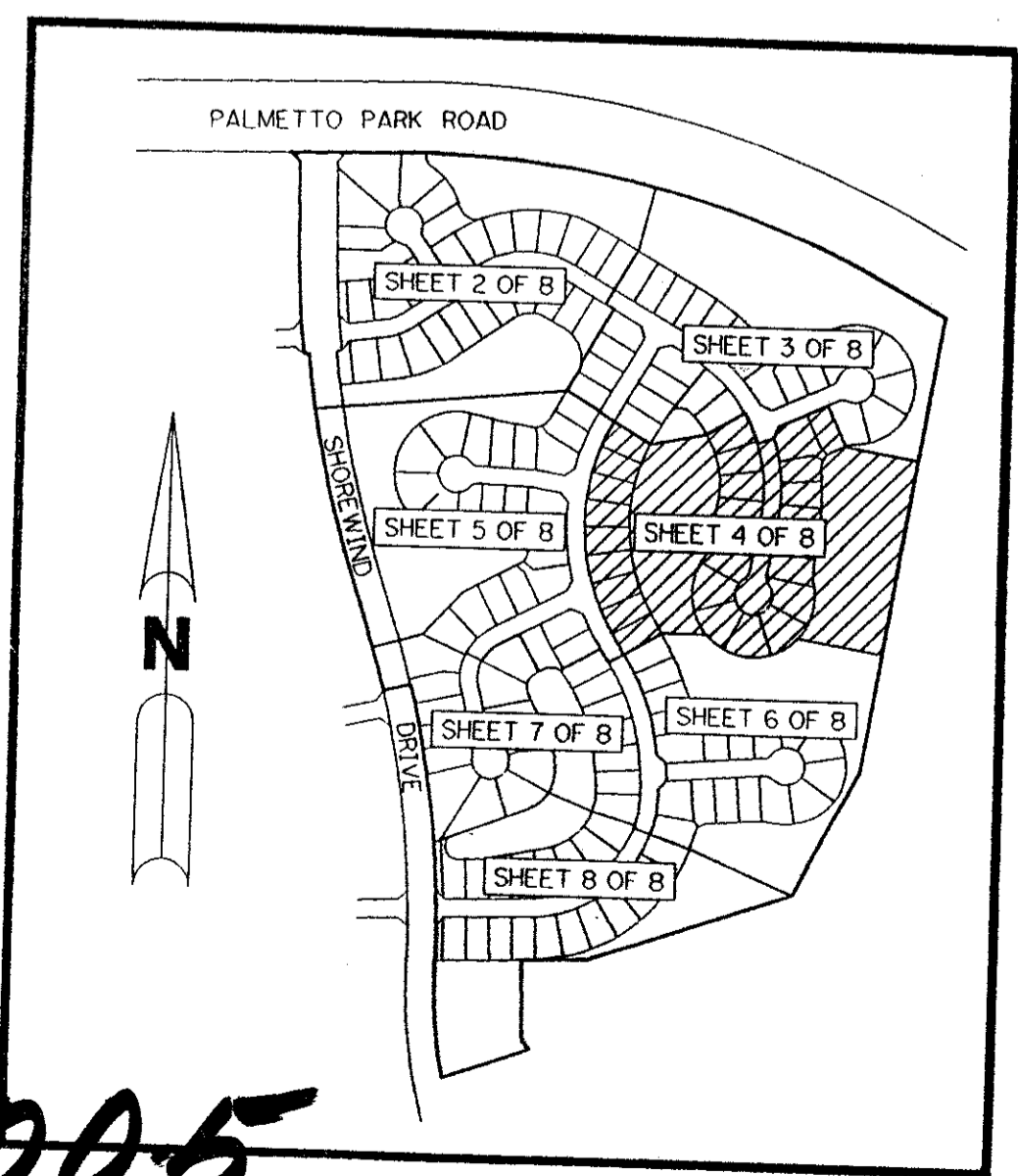
71



- LEGEND:**
- - PERMANENT REFERENCE MONUMENT, PLS #4213
 - - PERMANENT CONTROL POINT, PLS #4213
 - Δ - DELTA ANGLE
 - A - ARC LENGTH
 - R - RADIUS
 - D.E. - DRAINAGE EASEMENT
 - F.P.E. - FLOOD PLAIN EASEMENT
 - L.A.E. - LIMITED ACCESS EASEMENT
 - L.M.E. - LAKE MAINTENANCE EASEMENT
 - N.R. - NOT RADIAL
 - O.R. - OFFICIAL RECORD
 - O.R.B. - OFFICIAL RECORD BOOK
 - O.S. - OPEN SPACE
 - P.B. - PLAT BOOK
 - PGS. - PAGES
 - P.L.S. - PROFESSIONAL LAND SURVEYOR
 - S.T. - SURVEY TIE LINE
 - U.E. - UTILITY EASEMENT
 - L.M.A.E. - LAKE MAINTENANCE ACCESS EASEMENT
 - L.E. - LANDSCAPE EASEMENT
 - F.F.L.C. - FLORIDA FRUITLAND COMPANY'S
 - SUB. NO. 2 - SUBDIVISION NO. 2
 - S.B.T. - SOUTHERN BELL TELEPHONE
 - R.O.W. - RIGHT-OF-WAY

PET. 80-47
ROADS \$1139.00
PER UNIT

THIS INSTRUMENT PREPARED BY
 PERRY C. WHITE P.L.S. 4213 STATE OF FLORIDA
 LAWSON, NOBLE AND ASSOCIATES, INC.
 ENGINEERS PLANNERS SURVEYORS
 WEST PALM BEACH, FLORIDA



TRACT "L1"
 WATER MANAGEMENT TRACT SHALL BE MAINTAINED BY
 BW HOMEOWNERS ASSOCIATION, INC., WITHOUT RECOURSE
 TO PALM BEACH COUNTY.

TRACT "L1"
 WATER MANAGEMENT TRACT SHALL BE MAINTAINED BY
 BW HOMEOWNERS ASSOCIATION, INC., WITHOUT RECOURSE
 TO PALM BEACH COUNTY.

TRACT 9
 F.F.L.C. SUB. NO. 2

TRACT 9
 F.F.L.C. SUB. NO. 2

PARCEL E
 BOCA WINDS
 SUBDIVISION * BOCA WINDS
 BOOK 72
 FLOOD MAP # 1000
 ZONING RT
 QUAD * 69
 ZIP CODE 33418
 SEE 80-47
 PUD NAME BAY WINDS
 33433

T&Z 778

0201-005

BOCA WINDS - PARCEL E

KEY MAP
 N.T.S.
 72/71
 SHEET 4 OF 8